

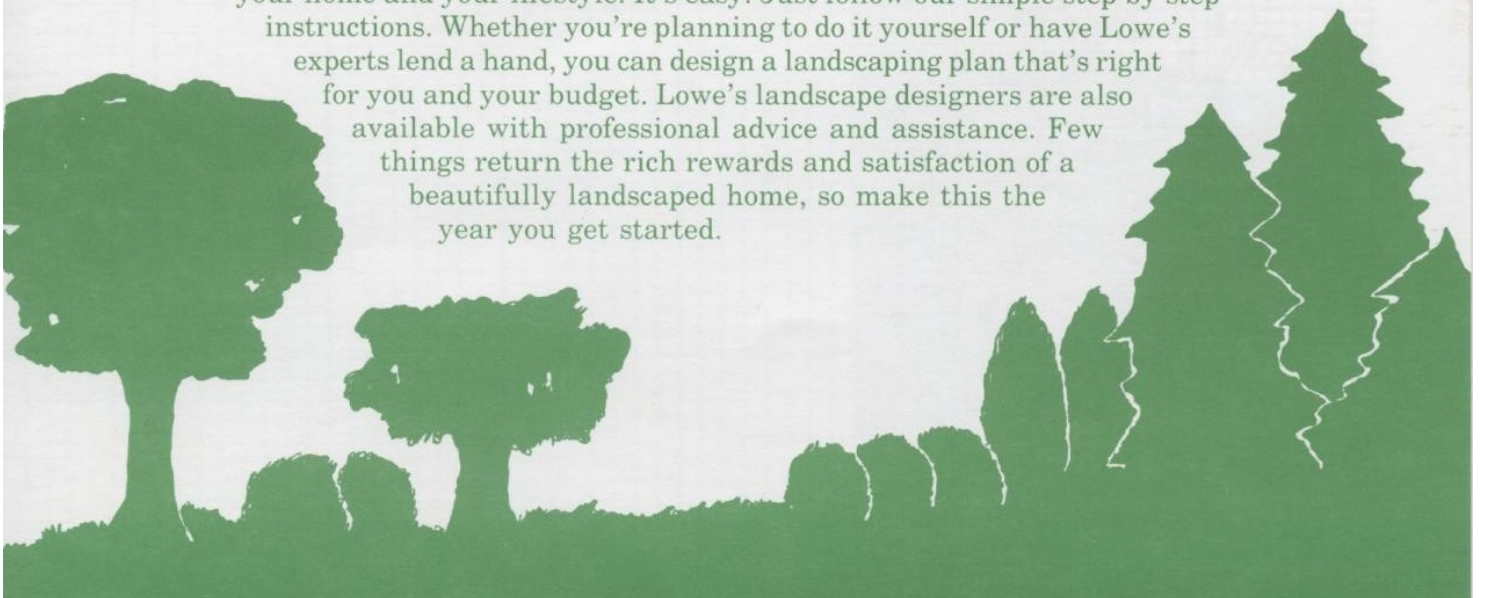


1640 - 4th Ave. N.E. • Box 216 • Minot, ND • 838-2868
Just West of All Seasons Arena on 4th Avenue N.E.

YOUR ONE-STOP YARD AND GARDEN STORE

HOME LANDSCAPE DESIGN KIT

We'd like to help you create a beautiful, personal landscape . . . one that enhances your home and your lifestyle. It's easy. Just follow our simple step-by-step instructions. Whether you're planning to do it yourself or have Lowe's experts lend a hand, you can design a landscaping plan that's right for you and your budget. Lowe's landscape designers are also available with professional advice and assistance. Few things return the rich rewards and satisfaction of a beautifully landscaped home, so make this the year you get started.



STEP 1.


MEASURE AND SKETCH YOUR YARD AS SHOWN BY EXAMPLE ON THE INSIDE OF THIS KIT.

- A. Measure with tape; be accurate to the nearest foot.
- B. Allow one square of grid for each foot of property.
 - If large yard, use one square for each two feet.
- C. Use a pencil so mistakes can be erased.
- D. Draw the position of your home and lot accurately.
 - Show all windows, sidewalks, doors, driveways, patios, fences, overhead or buried wires, or other permanent structures.
 - Indicate all existing trees, shrubs, flowerbeds, and gardens.
 - Locate dryer vent, water faucets, downspouts.
 - Indicate the direction north relative to your home.

STEP 2.

WHAT DO YOU WANT IN YOUR LANDSCAPE?

A. Check items you'd like or add your own ideas.

- 
- Garden
 - Fruit Trees
 - Shade Trees
 - Wind Protection
 - Play Area
 - Flower Beds
 - Patio or Deck
 - More Parking Area
 - Clothes Line
 - Rocks, Boulders, Bark Chips, etc.
 - Bird Bath
 - Fountain
 - Others _____

B. Do you now have . . .

- Underground Sprinklers
- Pets
- Swimming Pool
- Soil Problem
- Water Problem
- Steep Slopes

C. List your favorite plants (to be used in your landscape).

STEP 3.

DESIGNING YOUR LANDSCAPE FOR YOUR PERSONAL NEEDS.

Follow these basic principles when considering your design . . .

- A. Divide your yard into use areas: children's play area, private patio or cookout area screened by plant material, public area - usually front yard.
- B. Consider shade trees where beneficial.
- C. Trees or shrubs to screen unwanted views into or out of your yard.
- D. Avoid using large trees and shrubs too close which will eventually overwhelm the house.
- E. Use a mixture of plants for interest and variety as the seasons change.
- F. Allow proper spacing between plants for mature size.
- G. Consider long term goals and future plans — more patio area, a new garage, more garden area, less play area, etc.

Using these guidelines, you're ready to start designing. You can do it at home, or bring this kit with a sketch of your yard down to Lowe's Garden Center, where we can help you complete your plan to fit your personal preferences and budget.

- We will show you the actual trees and shrubs or pictures of them.
- We will tell you which plants do best in certain areas — wet vs. dry, shade vs. sun, windy vs. sheltered.
- We will explain how to plant and care for trees and shrubs.
- If you prefer, we can come to your home and do the actual planting and install edging and mulch.

IF YOU DON'T FEEL COMFORTABLE DOING IT YOURSELF, ONE OF OUR LANDSCAPE DESIGNERS, FOR A SMALL CHARGE, CAN VISIT YOUR HOME OR BUSINESS AND DRAW A PLAN FOR YOU.

STEP 4. PREPARE FOR PLANTING.

- A. Remove sod in the planting area.
- B. Break up lumps, rake soil smooth.
- C. If your soil is not good rich soil, spade in peat or well rotted manure.

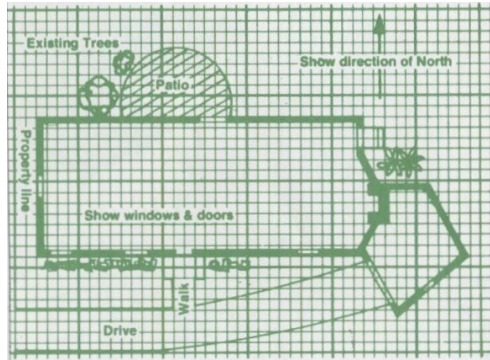
STEP 5. PLANTING TECHNIQUES.

- A. Dig a hole at least 12" wider and 6" deeper than the spread and depth of root system.
- B. **Keep the roots moist** — don't let roots become exposed to sun or wind for even a few minutes.
- C. Loosen the soil at the bottom of the hole.
- D. Plant at a depth equal to or slightly deeper than the plant was in the container or nursery. If you are uncertain about planting depth, ask your nurseryman.
- E. Fill the hole $\frac{2}{3}$ full with well-prepared soil.
- F. Firm soil by filling hole with water; be sure that all air pockets are eliminated.
- G. Leave a 2" saucer shaped catch basin for watering.
- H. Stake large trees for the first growing season (do not allow wire to be next to the bark).

STEP 6. PROPER CARE.

- A. Make frequent application of plant food or fertilizers during the growing season. Fertilizers, watering, and cultivation will get your new plants off to a good start.
- B. Deep watering is the key to a well-rooted healthy tree or shrub. (Supplement rainfall, use a soaker or trickle hose.) A mulch will prevent crusting and reduce evaporation.
- C. The nursery will advise you on pruning. The object of pruning is to maintain the desired shape and size and to remove dead and diseased branches. Be sure wounds larger than 1" are covered with tree dressing to inhibit insects and disease.
- D. Inspect for insects or disease. Lowe's Garden Center personnel want to help in the care of your plants. Call on us.

WE LOOK FORWARD TO HELPING YOU BEAUTIFY YOUR HOME. PLEASE LET US KNOW HOW WE CAN HELP YOU. — LOWE'S GARDEN CENTER



BEFORE YOU START

- Notice the sketch to the left. It shows the type of diagram you are going to draw.
- Be accurate with measurements.
- Use pencil.
- Draw in all existing items as described in Step #1.
- Simple circles can be used for existing trees and shrubs. (Label what the existing plants are.)

One small square per foot, One large square per 8 feet. Show direction of North.

A large grid area for drawing a site plan. The grid consists of small squares (1 foot by 1 foot) and larger squares (8 feet by 8 feet). A north arrow is located at the top center of the grid.



YOUR ONE-STOP YARD & GARDEN STORE FOR:

- Healthy Northern Grown Nursery Stock
- Potted Trees and Shrubs for Summer and Fall Planting -
Fruit Trees, Shade Trees, Evergreen Trees, and Shrubs
 - Residential and Commercial Landscape Design
and Installation Service
 - Landscape Accessories: Edging, Lava Rock,
Landscape Timbers, and Decorative Bark
- Christmas Trees and Complete Trim-A-Tree Shop
 - Flowering Gift Plants
 - Gift Certificates
 - Home Decor Accents
- Fresh and Silk Bouquets, Corsages, and Arrangements
For Weddings and All Special Occasions
- Complete Line of Houseplants, Cacti, Succulents,
Hanging Baskets, Vines, etc.
 - Lawn and Garden Care Products
 - Perennial and Annual Flowers
 - Vegetable and Fruit Plants